



# Your automation, our passion.

**Paolo Cotugno**

**Area Manager  
Process Automation**

+39 039 6292 234

+39 039 6292 390

+39 335 5782 848

[pcotugno@it.pepperl-fuchs.com](mailto:pcotugno@it.pepperl-fuchs.com)

[www.pepperl-fuchs.it](http://www.pepperl-fuchs.it)



**Pepperl+Fuchs srl**

Via delle Arti e Mestieri, 4  
20884 Sulbiate MB - Italy



 **PEPPERL+FUCHS**

# Mannheim 1945

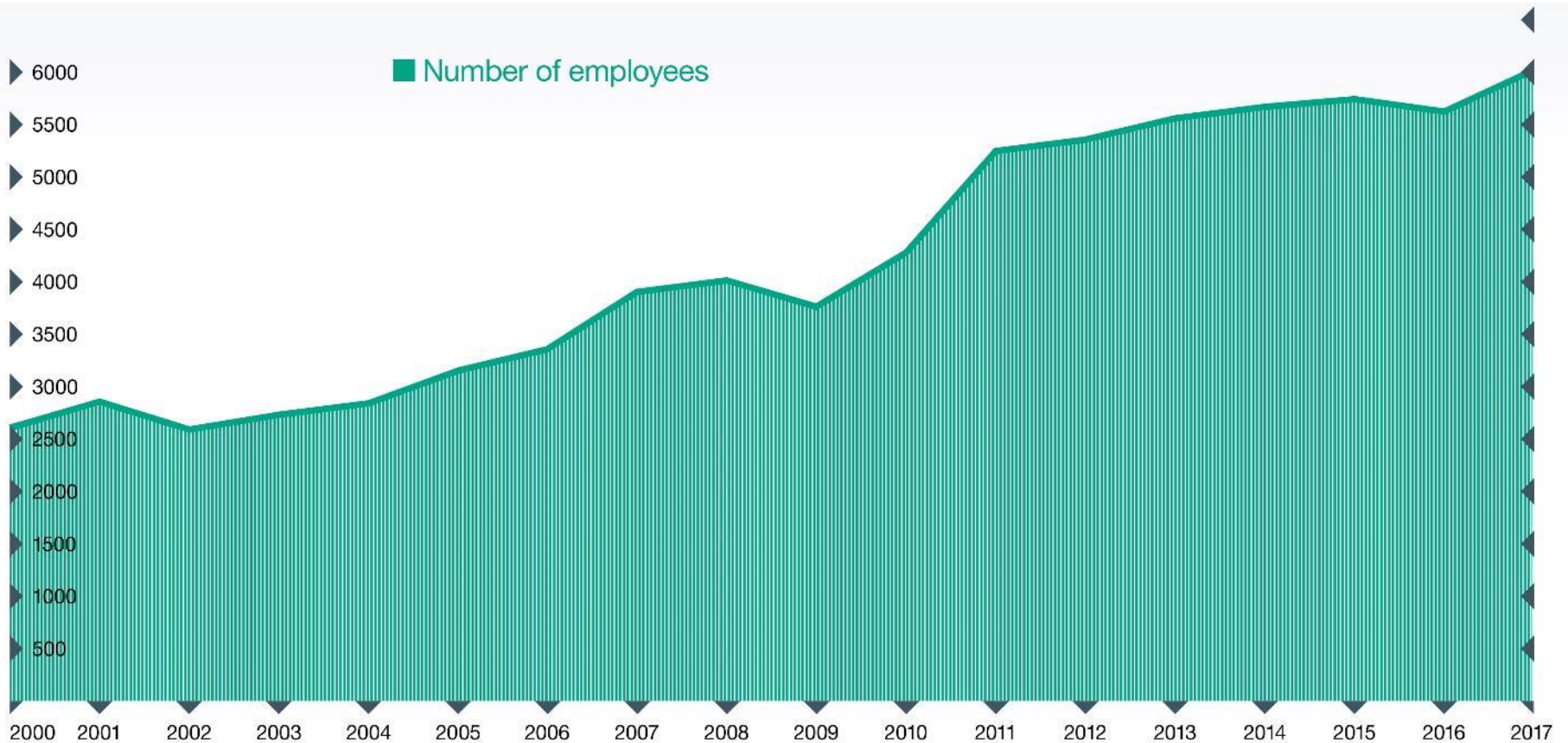
Walter Pepperl and Ludwig Fuchs establish a radio repair workshop in Mannheim.  
The company moves to a larger building in 1970 setting the course for future growth.



# 6.200 Employees Worldwide

Behind every success are people with ideas. Our employees guarantee that we will continue to develop and bring innovative products to the market.

## Employees

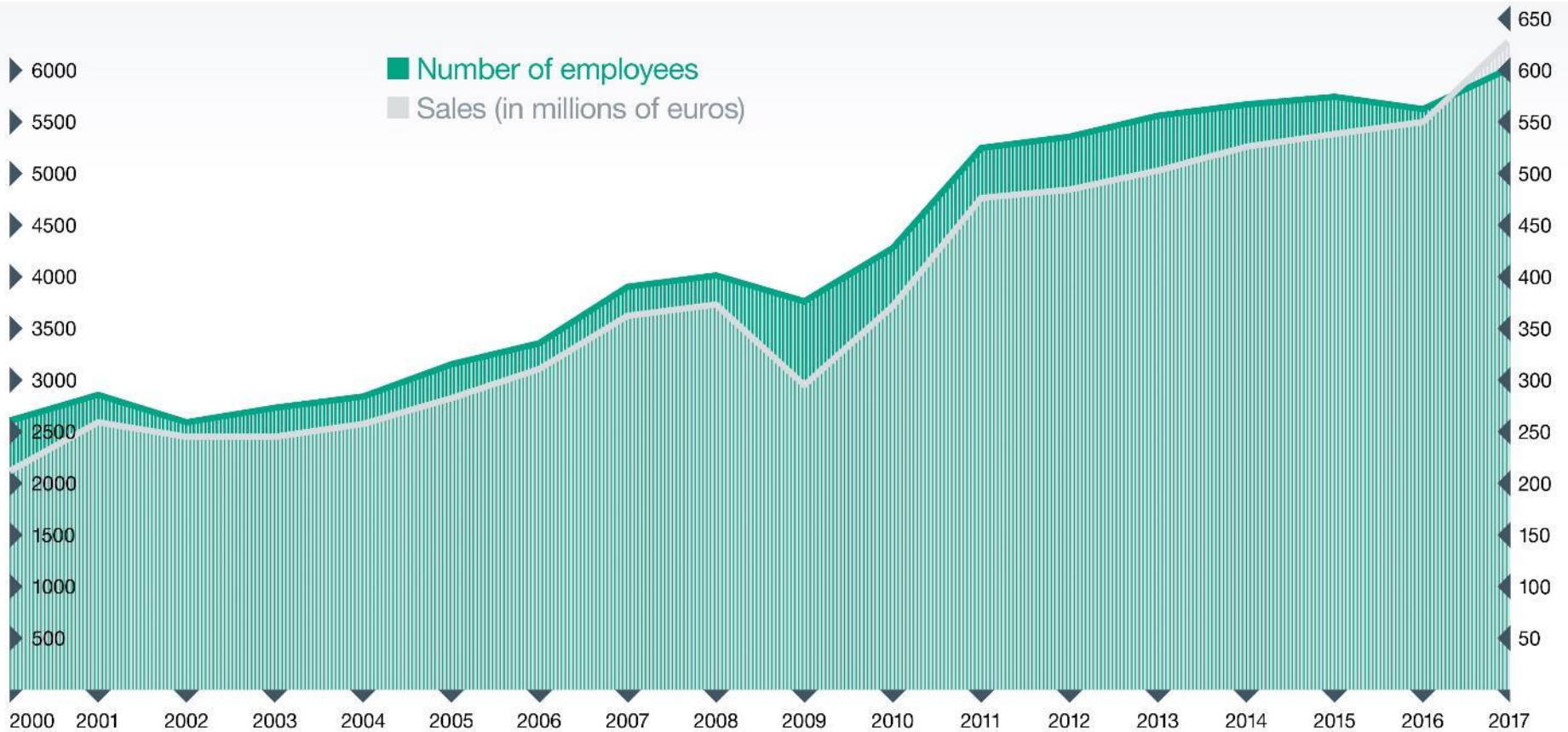


# Annual Sales of 670,000,000 €

Pepperl+Fuchs always remains on track, even under difficult economic circumstances – this is proven by our stable sales figures.

**Employees**

**Euro / millions**

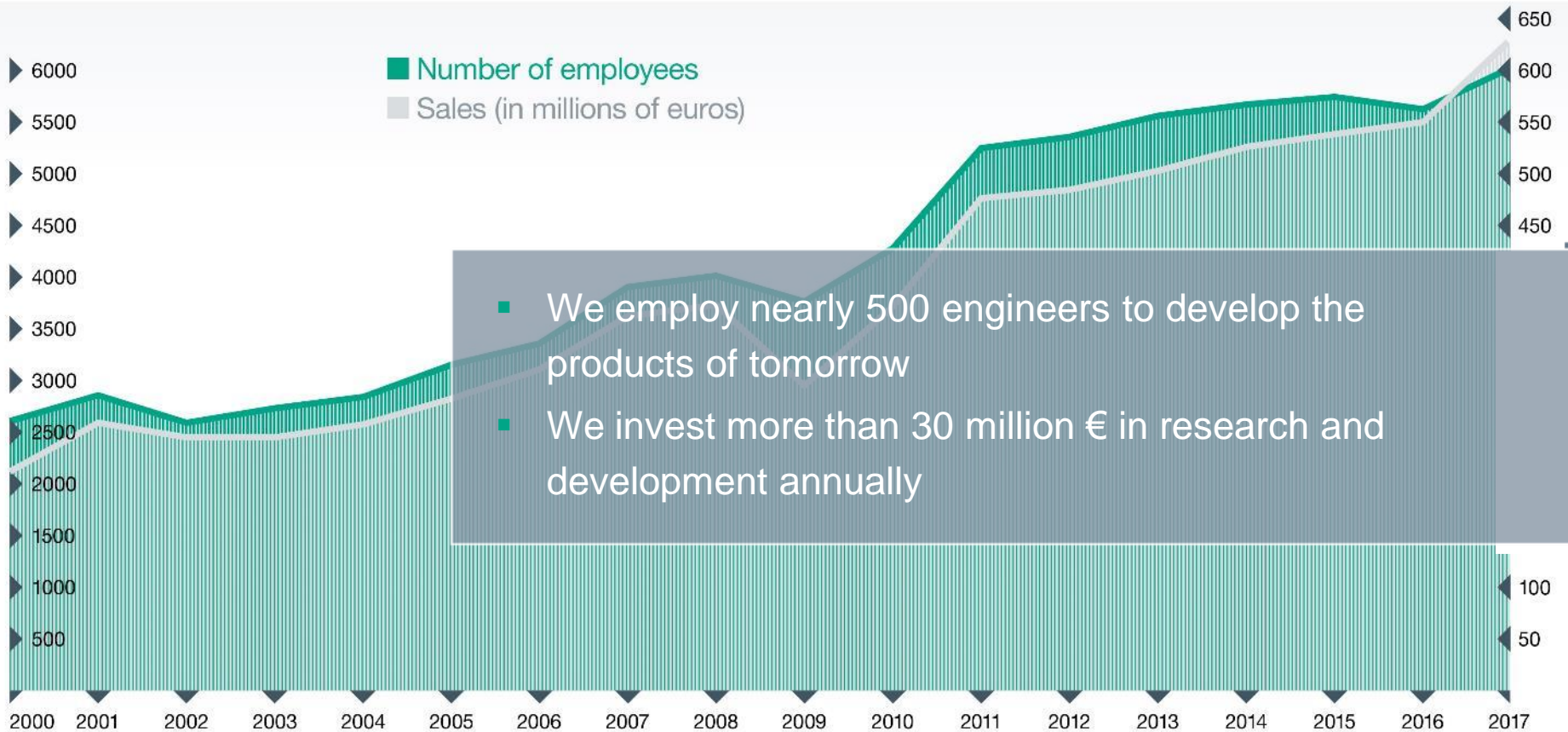


# Annual Sales of 630,000,000 €

Pepperl+Fuchs always remains on track, even under difficult economic circumstances – this is proven by our stable sales figures.

**Employees**

**Euro / millions**



- We employ nearly 500 engineers to develop the products of tomorrow
- We invest more than 30 million € in research and development annually

# Areas of Application and Target Industries



**Power Industry**

# Industrial Mobile Computing and Communication

## **Benefits:**

- One stop shop for ultra-rugged enterprise mobility - increasing efficiency and elimination of risk
- Globally Ex-certified units in a wide range of display sizes, technologies and capabilities
- Enabling new levels of integrated visibility & automation
- Global support (hardware/software) and service (SLA)



## ***Applicazioni per Smartphone - dal consumer all'industria***

**Esigenza iniziale**

**Analisi di fattibilità**

**Definizione gruppo di lavoro**

**Elaborazione Proposta tecnico /economica**

**Condivisione soluzione**

**KOM**

**Collaudo**

**Messa servizio**





# Esigenza iniziale

Riduzione tempi morti e «cost saving» per permessi di lavoro



# Analisi di fattibilita'

Fase di studio per capire possibilita' di procedere



# Definizione del gruppo di lavoro

Selezione delle persone e Società da coinvolgere



# Analisi tecnica e proposta commerciale

Elaborazione tecnica , stima costi e quotazione economica



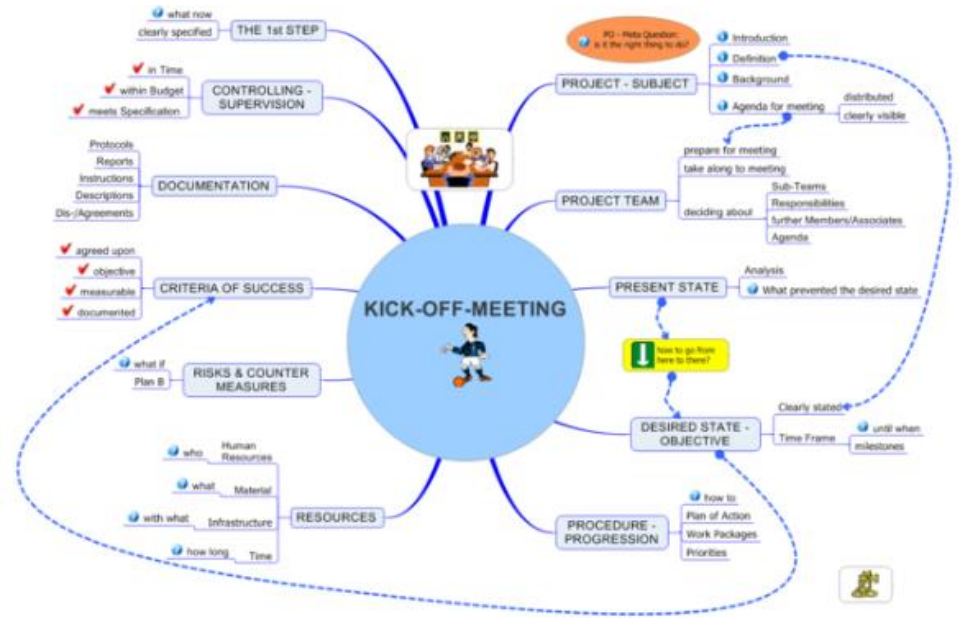
# Condivisione soluzione

Trasferimento progetto a cliente



# K.O.M.

Trasferimento progetto a cliente



*The Project Kickoff Meeting*  
 Your Most Important Tool for Success



# Collaudo

FAT, prove, test e simulazioni

## Factory Acceptance Testing



# Messa in servizio

Start up e produzione







Grazie !



 **PEPPERL+FUCHS**